

## (一) signal source description

The description of the SSID of the wireless network signal on the campus of Taipei University is as follows:

- (1), NTPU: general website login on campus
- (2), NTPU\_5G: general website login on campus
- (3), NTPU-int: Login to the International Conference Hall of Business Studies on campus
- (4) TANetRoaming: domestic inter-school roaming, web login
- (5), NTPU-802.1x: On-campus account login, encrypted connection
- (6) Eduroam: international roaming, encrypted connection

Among them, Eduroam is a plan to establish a wireless local area network roaming system among international educational and scientific research institutions, which is intended to promote the sharing of wireless local area network services among global education and scientific research institutions. For details, please refer to: [eduroam roaming information](#).

Note: SSID is the abbreviation of Service Set Identifier. Public wireless network base stations will set more than one SSID name for user identification.

## (二) signal coverage description

### (1), Taipei Minsheng Campus

1. Teaching Building: Part B1 covers the whole area from the 1st floor to the 5th floor.
2. Information Building: Fully covered.
3. Gym: fully covered.

### (2), Taipei Jianguo Campus

1. Ziqiang Building: The open classrooms on the 1st floor are completely covered.
2. Zhuangjing Building: The open classrooms on the 1st floor are completely covered.
3. Social Science Museum: The second floor is fully covered.

### (3) Three Gorges Campus

1. Humanities Building: B1 to 4th floor open classrooms, 1st floor conference hall and 5th to 8th floors are fully covered.
2. Business building: B1 store, community area and open classrooms, open classrooms and conference rooms from the 1st to the 3rd floor and the 5th floor are fully covered.
3. Administration Building: Fully covered.
4. Social Science Building: Fully covered.
5. Law Building: Fully covered.
6. Public Affairs Building: Fully covered.
7. Graphics Building: Fully covered.
8. Sports venues: Some areas from Floor B1 to Floor 1 are covered.
9. Chong Yue Pavilion: fully covered.
10. Comprehensive gymnasium and activity center: fully covered.

11. Rhythm Motor Information Building: fully covered.

12. Wood Art Classroom: Fully covered.

### (三) Login Account Description

(1), the school staff and students

1. "Faculty and Staff": Please use the "Faculty and Staff Email Account Password" to log in.

2. "Students, alumni who have applied for an alumni card": Please use the "student email account password" to log in. (Example: s410012565)

(2) Outsiders

To become a member of the "Inter-School Roaming Program", please log in with the "full account and password of the original unit". (Example: abc@XXX.edu.tw, abc is the account number, XXX is the original unit information)

### (四) Login Method Description

#### **(1) use browser method(web) to log in**

1. Taipei Minsheng and Jianguo Campus (SSID:NTPU and TANetRoaming):

After searching for NTPU and TANetRoaming base station and connecting, the web page will be automatically opened and the authentication screen will appear (as shown in Figure 1). html.



用戶名稱:

密碼:

#### 校園網路使用規範

=====

- 一、用戶名稱與密碼與本校電子郵件信箱之帳號密碼相同。(帳號: s4100xxxx)
- 二、為有效管理校園網路環境, 提供網際網路(Internet)資源之通暢及安全服務, 特訂定本規範。
- 三、使用人應遵循網路禮節, 不得有惡意之人身攻訐、謾罵、散布不實言論或浪費網路資源等行為。
- 四、使用人有下列行為之一者, 本公司得停止其網路服務, 如涉及刑事責任者, 依法辦理:
  - 1.大量發送廣告信件。
  - 2.盜用他人或系統管理者權限。
  - 3.利用網路進行侵害智慧財產權之行為。
  - 4.無故洩漏其使用之密碼。
  - 5.無故洩漏工作上所接觸應保密之資訊。
  - 6.未經授權更改或使用網路位址 (IP)。
  - 7.在網路上散布或蒐集猥褻文字、圖像、影像、聲音等電磁紀錄。
  - 8.散布電腦病毒。
  - 9.其他不法或重大不當之行為。
- 五、本校無論如何不對因或與透過使用本校網路環境而造成本身或他人相關設備之損壞或引起之契約失或其他侵權行為之訴訟中的特別的、間接的、衍生性的損害或任何因使用而喪失所導致的之損害、或利潤負任何責任。

(圖一)

## 2. Sanxia Campus (SSID: NTPU, NTPU\_5G)

After searching for SSID: NTPU or NTPU\_5G and connecting, the authentication screen will appear when the webpage is automatically opened (as shown in Figure 2); if the browser is not automatically opened,

please open the browser manually and enter the URL: <https://1.1.1.1/fs/customwebauth/login.html> ..



## Welcome to NTPU Wireless Access Service

### 國立臺北大學無線網路登入系統

Please enter your username/password

請輸入帳號/密碼

Username/帳號

Password/密碼

I Agree with Policy Following 登入並同意以下條款

(圖二)

### 3. Sanxia Campus (SSID: TANetRoaming)

Search for SSID: TANetRoaming and connect, and the authentication screen will appear when the webpage is automatically opened (as shown in Figure 3). If the browser is not automatically opened, please open the browser manually and enter the URL: [https://1.1.1.1/fs/customwebauth/login\\_tanet.html](https://1.1.1.1/fs/customwebauth/login_tanet.html) .



## Welcome to TANetRoaming Wireless Access Service TANet無線網路漫遊交換中心登入系統

Please enter your username(username@domain)/password  
請輸入帳號(username@domain)/密碼

Username/帳號

Password/密碼

I Agree with Policy Following登入並同意以下條款

(圖三)

4.International

Conference Hall, Business Building, Sanxia Campus (SSID:NTPU-int)

After searching for the NTPU-int base station and connecting to it, the webpage will be automatically opened and the authentication screen will appear (as shown in Figure 4).

NTPU-int

登入 取消

---



# 國立臺北大學

## National Taipei University

---

Username:

Password:

三峽校區商學大樓國際會議廳無線網路帳號認證系統說明  
請使用本校電子郵件的帳號密碼登錄

---

(圖四)

(2) use 802.1x authentication to log in

Currently, only the map building area of Sanxia Campus and the teaching building area of Taipei Campus are open for use

Use NTPU-802.1x or eduroam base station to encrypt the connection, according to the use of different devices, the instructions are as follows:

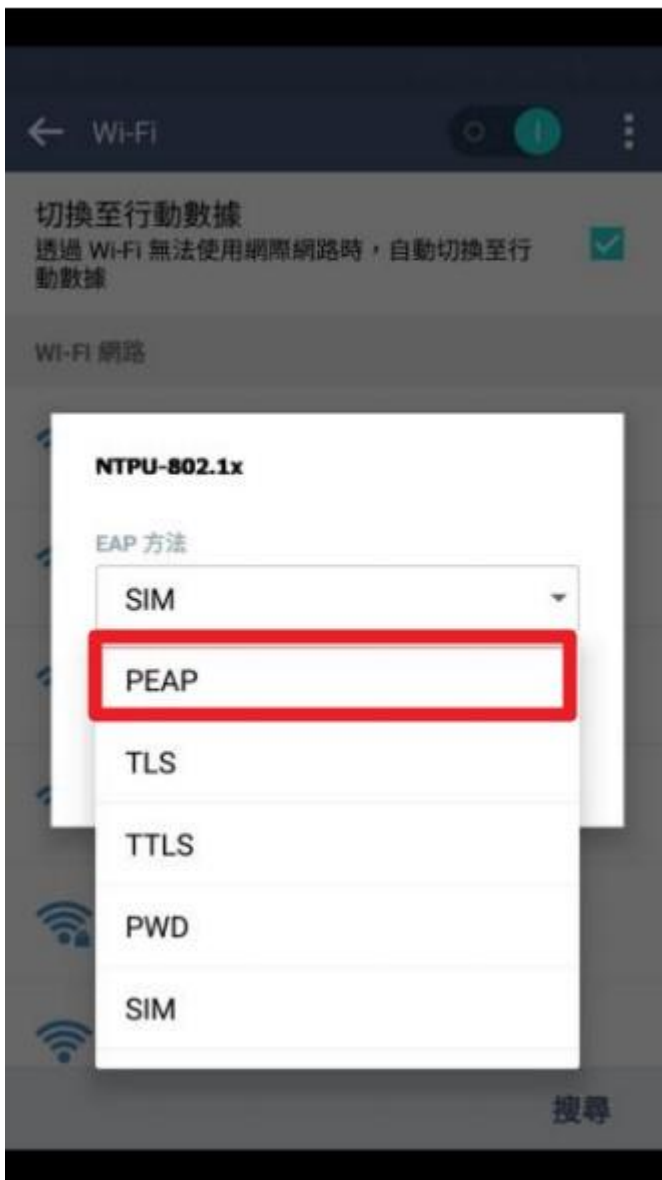
※Note: Do not use other people's computers or handheld devices to log in to your own account and password.

### 1. Instructions for connecting the NTPU-802.1x to the Android system

(1). Open "Settings" -> enable Wi-Fi and click NTPU-802.1x



(2). Select "PEAP" for "EPA Method"



(3). Enter the school email account and password

For student status, please enter student email account and password; for faculty and staff, please enter faculty email account and password

Example: s10012345 (student email account), abc (faculty and staff email account)





(4). The status of NTPU-802.1x is displayed as connected, indicating that the connection is successful, and you can connect to the Internet.



2. Instructions for connecting the NTPU-802.1x to the iOS system

(1). Open "Settings" -> enable Wi-Fi and click NTPU-802.1x



(2). Enter our school email account and password

For student status, please enter student email account and password; for faculty and staff, please enter faculty email account and password

Example: s10012345 (student email account), abc (faculty and staff email account)



(3). The certificate message appears, click Trust.



(4). After completing the authentication, you can connect to the Internet.



### 3. Operating instructions for connecting NTPU-802.1x to Windows 7 and 8 systems

(1). The user must first check the version and bit size of the computer

Step 1. Console → System and Security → System

Step 2. Check the Windows version and system type as 32-bit operating system or 64-bit operating system

(2). Download the EAP-GTC installation file

Operating System 32 bit

64 bit

Windows 7      EAP-GTC-x86-Win7   EAP-GTC-x64-Win7

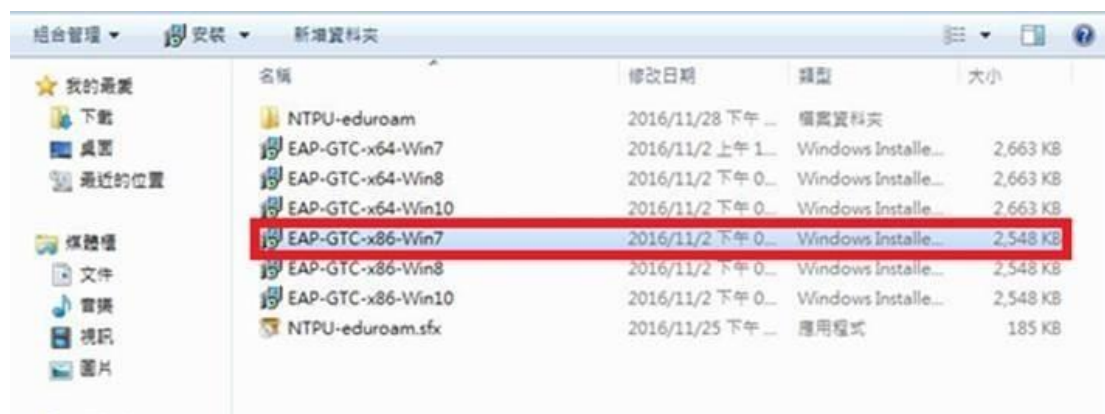
Windows 8      EAP-GTC-x86-Win8   EAP-GTC-x64-Win8

Windows 10    EAP-GTC-x86-Win10   EAP-GTC-x64-Win10

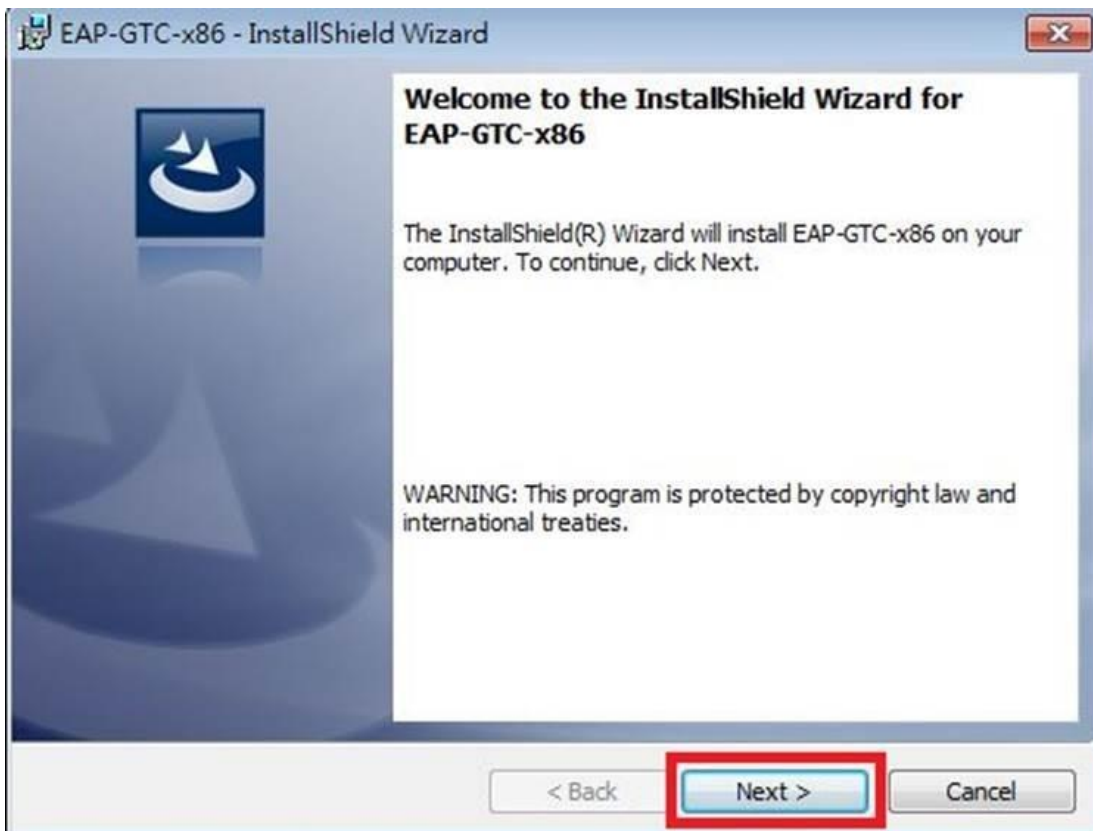
(3). Install the EAP-GTC installation file

The following takes Windows 7, 32-bit operating system environment as an example.

Step 1. Download and install "EAP-GTC-x86-Win7".



Step 2. After the installation file is executed, this screen appears, click "Next".

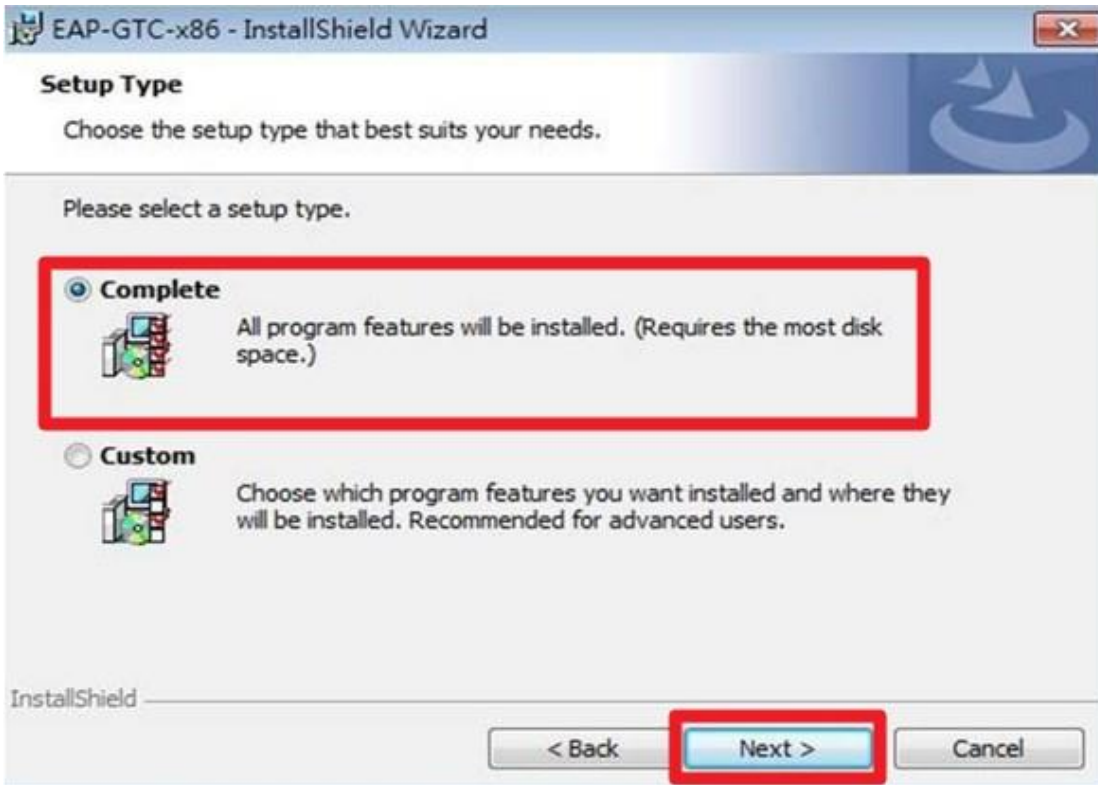


Step 3. Select "I accept the terms in the license agreement", and then click "Next".

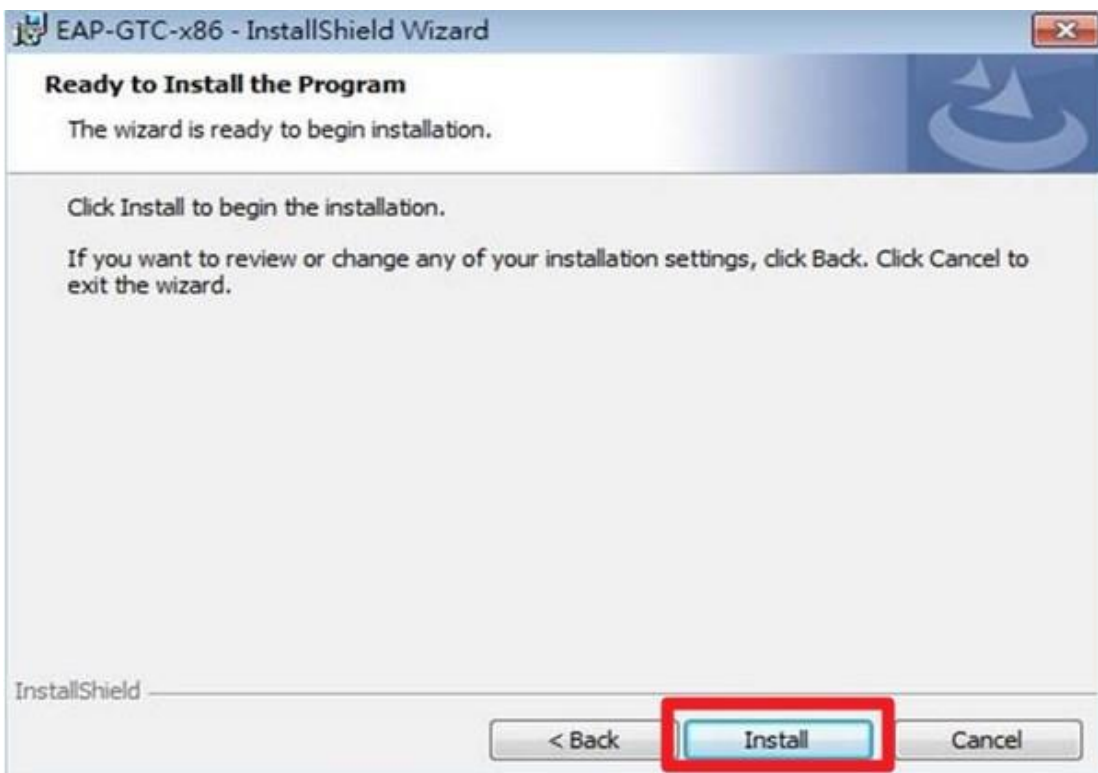


Step 4. Select "Complete" and click "Next".

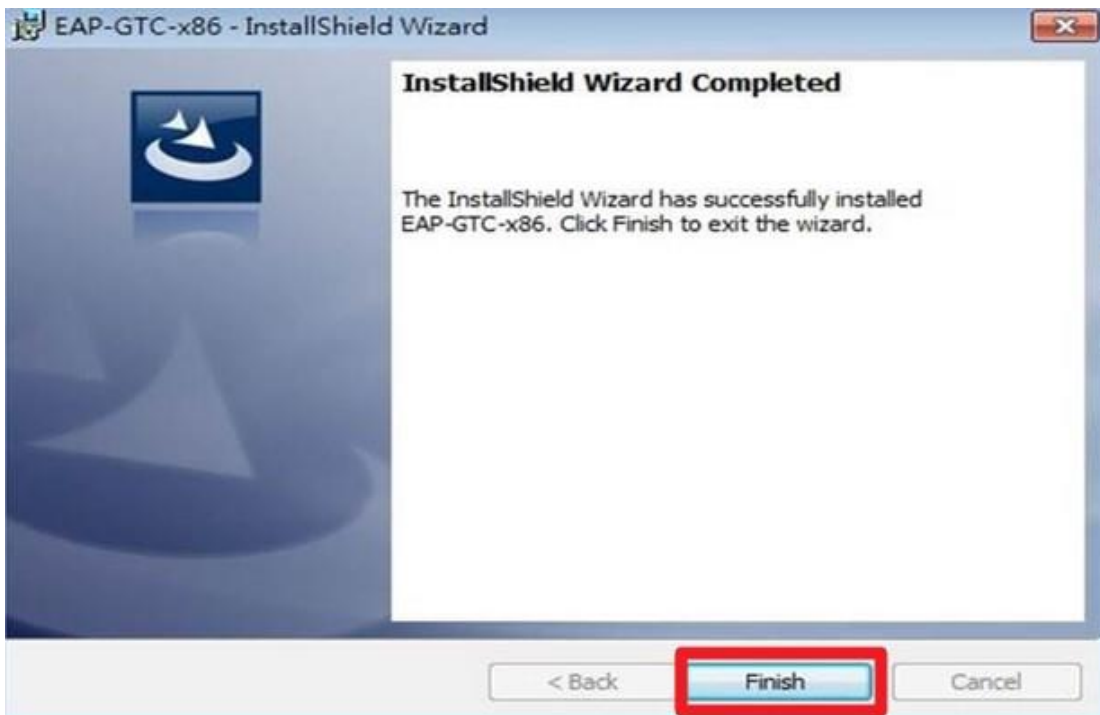




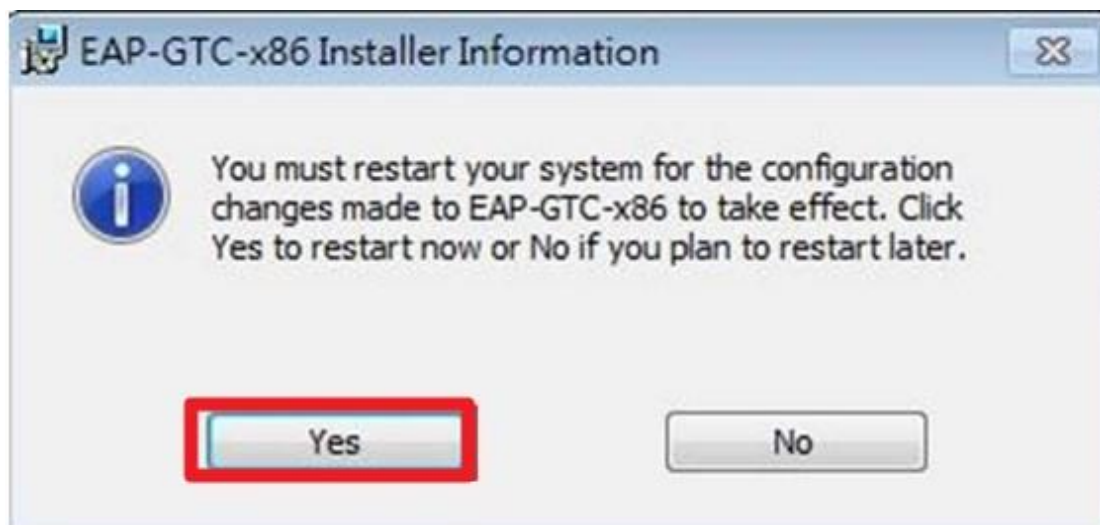
Step 5. Click "Install".



Step 6. The installation is successful, click "Finish".



Step 7. Select "Yes" and wait for the reboot to complete.



(4). Setting the wireless base station

Step 1. Go to "Control Panel" → "Network and Internet" → "Network and Sharing Center", and click "Manage Wireless Networks".



Step 2. Click "Add".



Step 3. Select "Manually create network profile".



Step 4. Enter "NTPU-802.1x" for the network name, "WPA2-Enterprise" for the security type, "AES" for the encryption type, and finally



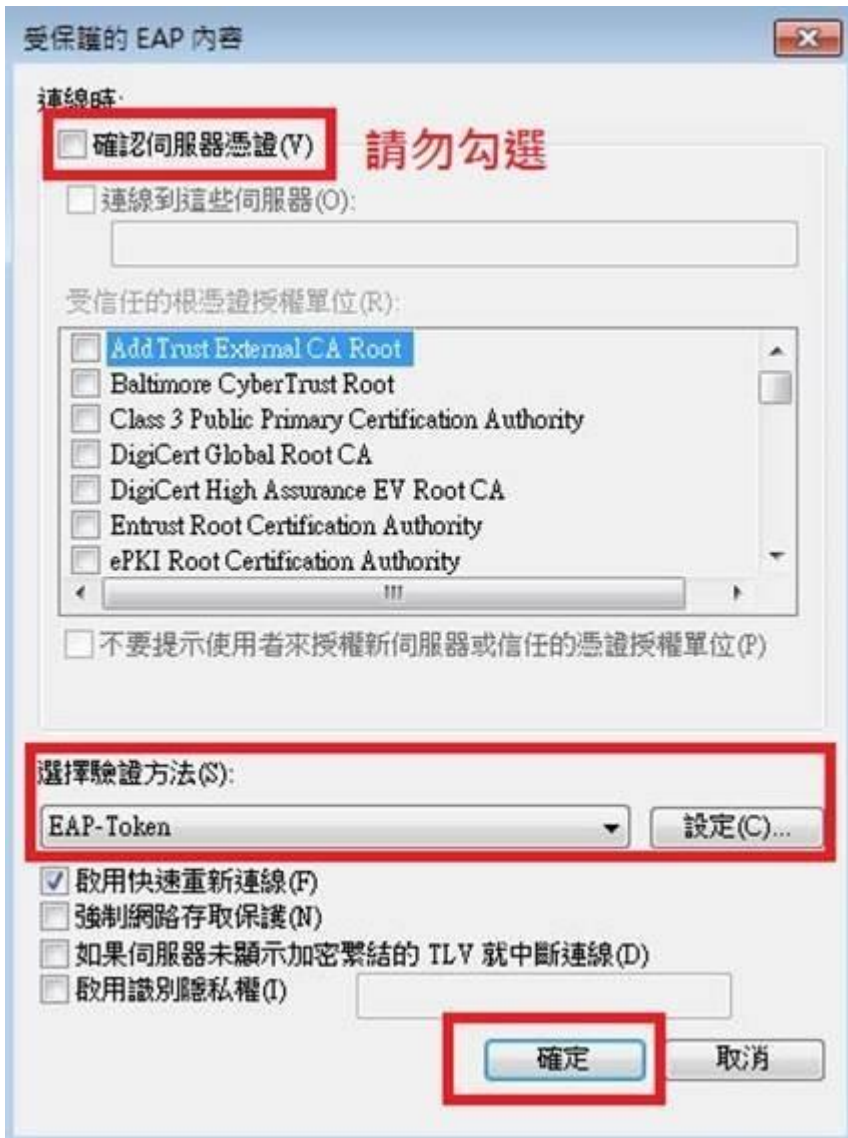
Step 5. A successful addition of the "NTPU-802.1x" screen, click "Change Connection Settings".



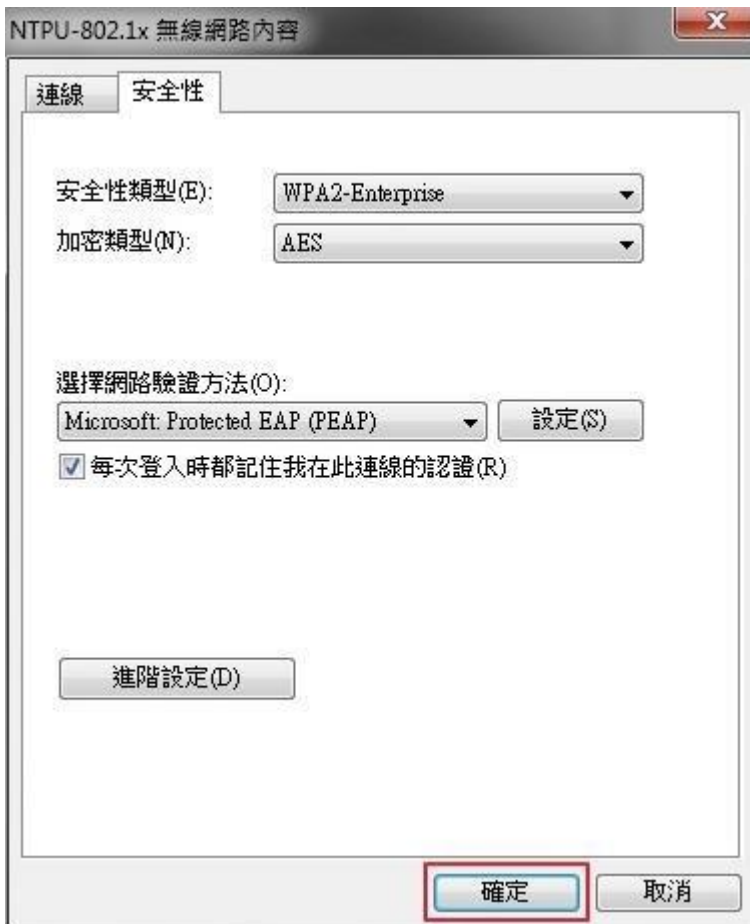
Step 6. Click on "Security" and click on "Settings".



Step VII. Do not check "Confirm Server Credentials". Select the authentication method EAP-Token and press "OK".



Step 8. Select "OK" and "Close" according to the following screen.



Step IX. In "Management Use (Wireless Network Connection)" In the Wireless Network window, you will find an additional "NTPU-802.1x" wireless base station name.



#### (5). Connection Test

Step 1. Click the wireless network icon in the lower right corner of the desktop, select "NTPU-802.1x", and press Connect.





Step 2. The following login screen will appear, please enter your school email account and Password, Logon domain No need to enter, click OK, you can go online.

Student email account → s+ student number (no need to enter "@webmail.ntpu.edu.tw")

Staff → Account (no need to enter @mail.ntpu.edu.tw))

#### 4. Instructions for connecting NTPU-802.1x to Windows 10

(1). The user must first check the version and bit size of the computer

Step 1. Console → System and Security → System

Step 2. Check the Windows version and system type as 32-bit operating system or 64-bit operating system

(2). Download the EAP-GTC installation file

Operating System 32 bit

64 bit

Windows 7      [EAP-GTC-x86-Win7](#)   [EAP-GTC-x64-Win7](#)

Windows 8      [EAP-GTC-x86-Win8](#)   [EAP-GTC-x64-Win8](#)

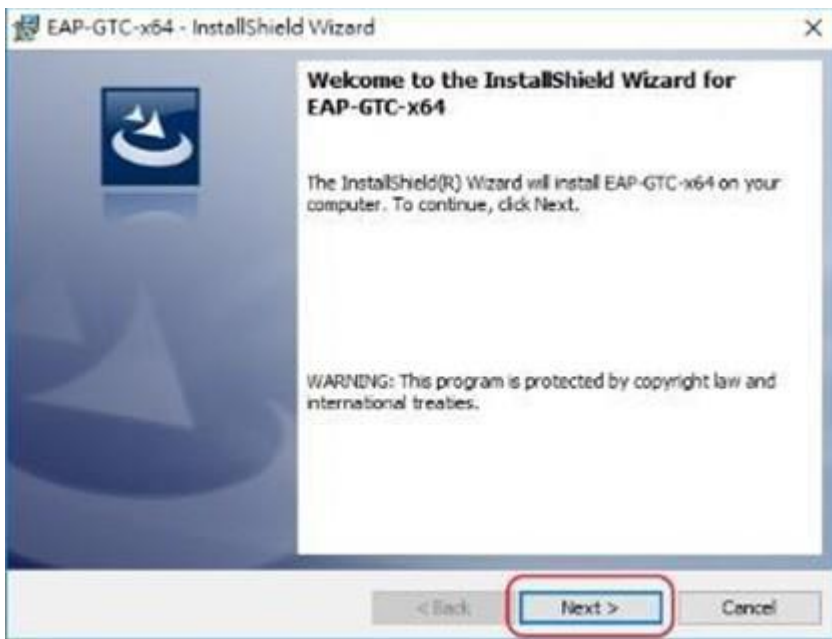
Windows 10      [EAP-GTC-x86-Win10](#)   [EAP-GTC-x64-Win10](#)

(3). Install the EAP-GTC installation file

The following takes Windows 10, 64-bit operating system environment as an example.

Step 1. Download the EAP-GTC installation file (64-bit), and execute the file to install.

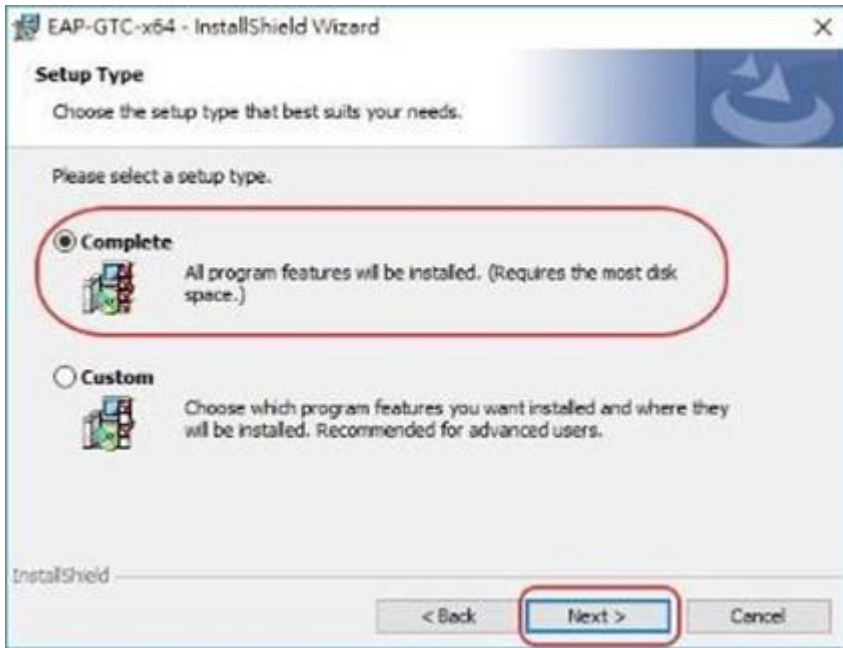
Step 2. After the installation file is executed, this screen appears, click "Next".



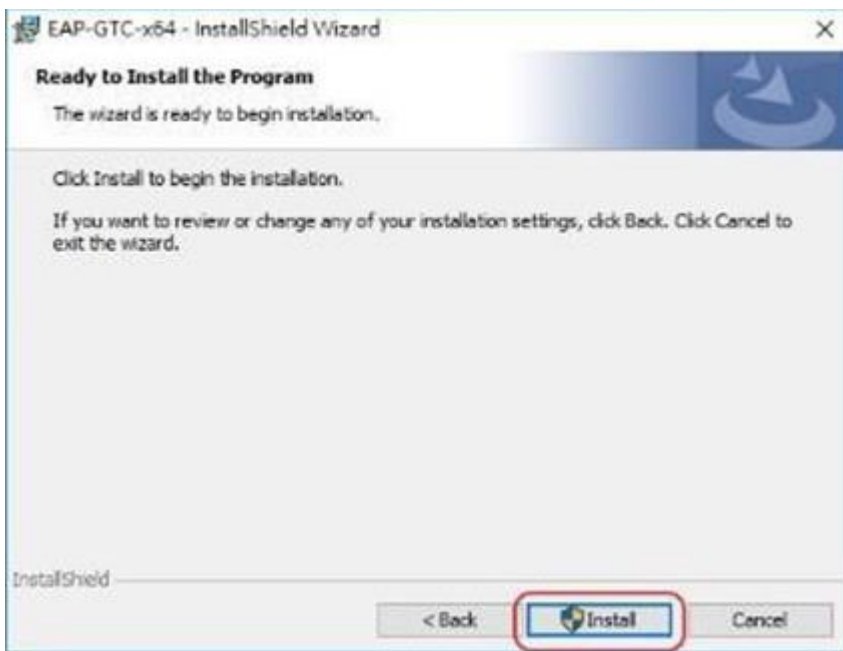
Step 3. Select "I accept the terms in the license agreement", and then click "Next".



Step 4. Select "Complete" and click "Next".



Step 5. Click "Install".



Step 6. The installation is successful, click "Finish".



Step 7. Select "Yes" and wait for the reboot to complete.



(4). Setting the wireless base station

Step 1. Click "Start" in the lower left corner of the computer desktop → select "Settings".



Step 2. Click "Network and Internet".



Step 3. Click "Status" → select "Network and Sharing Center".



Step 4. Click "Set up a new connection or network".



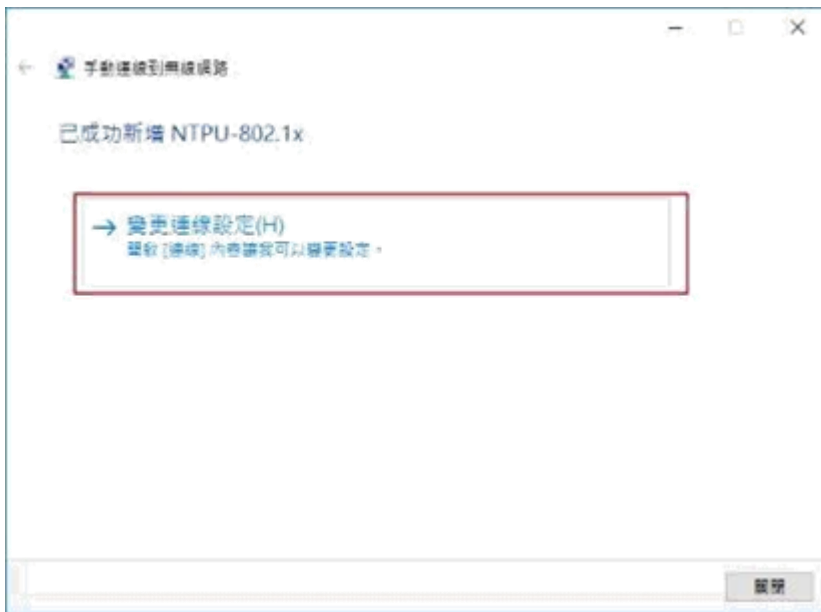
Step 5. Click "Manually connect to a wireless network".



Step 6. Please enter "NTPU-802.1x" for the network name, "WPA2-Enterprise" for the security type, and finally click "Next".



Step 7. Click "Change Connection Settings".



Step 8. Click the "Security" menu, and then click "Settings"



Step 9. Do not check "Verify server identity by verifying certificate", select "EAP-Token" as the authentication method, and then click "OK".





Step 10. Select "OK" and "Close" according to the following screen.



#### (5). Connection test

Step 1. Continue the above steps, the following login screen will appear at this time, please enter the school's email account and password, Logon domain does not need to be entered, click OK to access the Internet.

Student email account → s+student number (do not need to enter "@webmail.ntpu.edu.tw")

Faculty → Account (do not need to enter "@mail.ntpu.edu.tw")

Step 2. Click the wireless network icon at the bottom left of the operating system desktop, and the wireless base station name will appear as NTPU-802.1x. Then click "Connect" to complete the connection setting.



5. Instructions for removing NTPU-802.1x from Windows system

The following takes Windows 10, 64-bit operating system environment as an example.

(1). Click "Start" in the lower left corner of the computer system desktop, and then click "Settings".



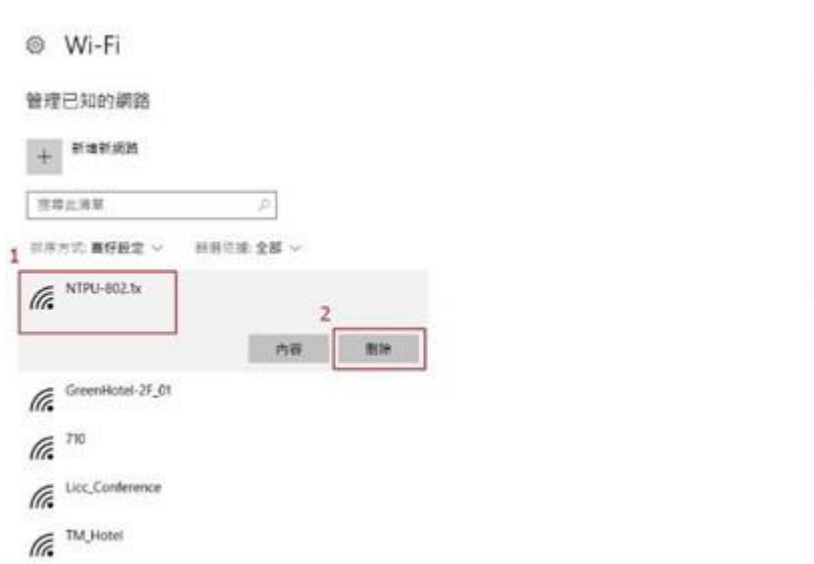
(2). Click "Network and Internet".



(3). Click "wi-fi" → "Manage Known Networks".



(4). Click "NTPU-802.1x", then click "Delete" to remove the setting.



### (3)use eduroam base station to encrypt the connection description

1. How to use eduroam on Android

Step 1. Open Settings→Turn on Wi-Fi and click eduroam

### 切換至行動數據

透過 Wi-Fi 無法使用網際網路時，自動切換至行動數據



WI-FI 網路

搜尋中...



NTPU

未偵測到網際網路存取，不會自動重新連接。



TANetRoaming

未偵測到網際網路存取，不會自動重新連接。



NTPU-802.1x



eduroam

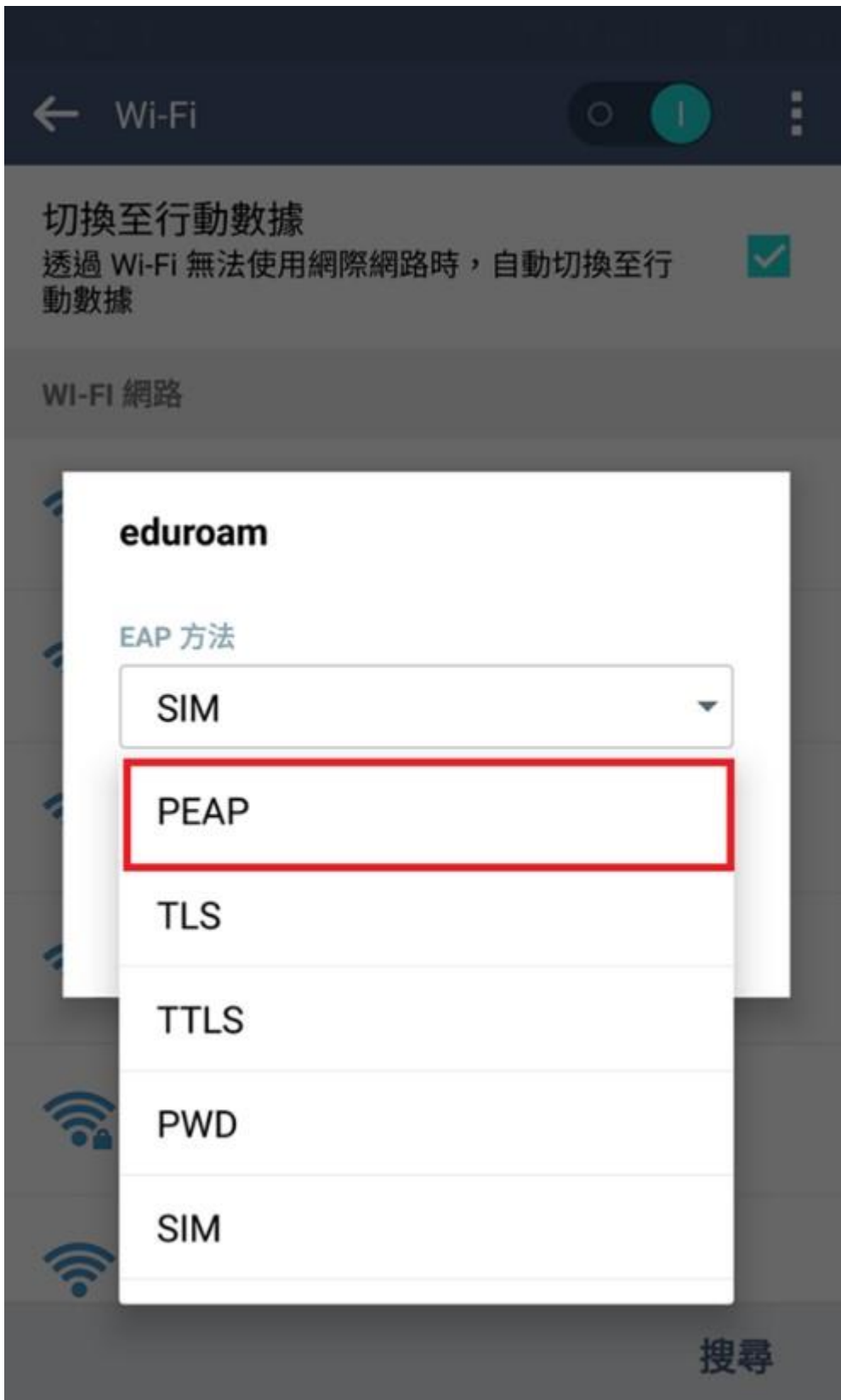


sysadm



sysadm\_test

搜尋



Step 3. Enter our school email account and password  
Student Email Account → [Account@webmail.ntpu.edu.tw](mailto:Account@webmail.ntpu.edu.tw)  
Faculty → [Account@mail.ntpu.edu.tw](mailto:Account@mail.ntpu.edu.tw)

Step 4. Connected is displayed at the bottom of Eduroam, indicating that the connection is successful and you can access the Internet



## 2. How to use eduroam on IOS

Step 1. Open Settings→Turn on Wi-Fi and click eduroam



Step 2. Enter our school email account and password  
Student Email Account → [Account@webmail.ntpu.edu.tw](mailto:Account@webmail.ntpu.edu.tw)  
Faculty → [Account@mail.ntpu.edu.tw](mailto:Account@mail.ntpu.edu.tw)



台湾大哥大

上午9:08

98%

輸入「eduroam」的密碼

取消

輸入密碼

加入

使用者名稱

帳號@mail.ntpu.edu.tw

帳號@webmail.ntpu.edu.tw

密碼

電子郵件密碼

模式

自動 >

1 2 3 4 5 6 7 8 9 0

- / : ; ( ) \$ & @ ”

#+=

.

,

?

!

'

⌫

ABC

space

return

Step 3. The certificate message appears, click Trust



Step 4. After completing the authentication, you can go online



### 3. Instructions for connecting eduroam to Windows system

(1). The user must first check the version and bit size of the computer

Step 1. Console → System and Security → System

Step 2. Check the Windows version and system type as 32-bit operating system or 64-bit operating system

(2). Download the EAP-GTC installation file

Operating System 32 bit                      64 bit

Windows 7            [EAP-GTC-x86-Win7](#)   [EAP-GTC-x64-Win7](#)

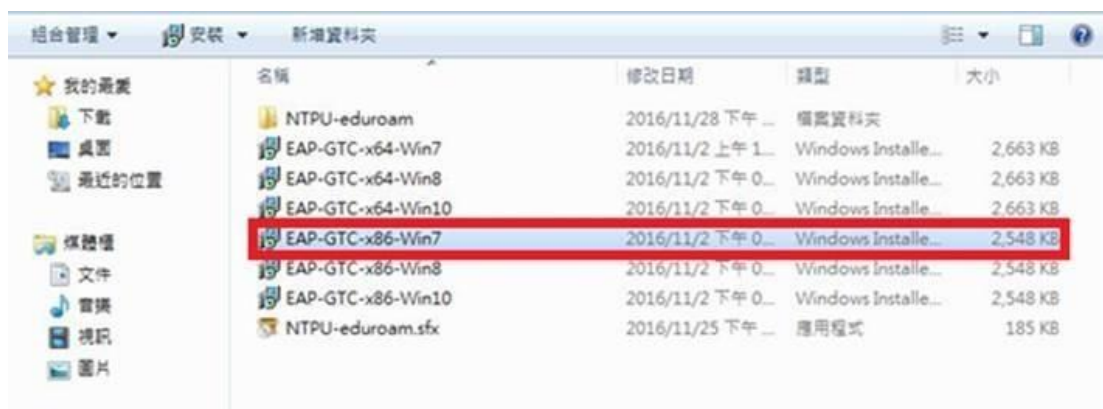
Windows 8            [EAP-GTC-x86-Win8](#)   [EAP-GTC-x64-Win8](#)

Windows 10           [EAP-GTC-x86-Win10](#)   [EAP-GTC-x64-Win10](#)

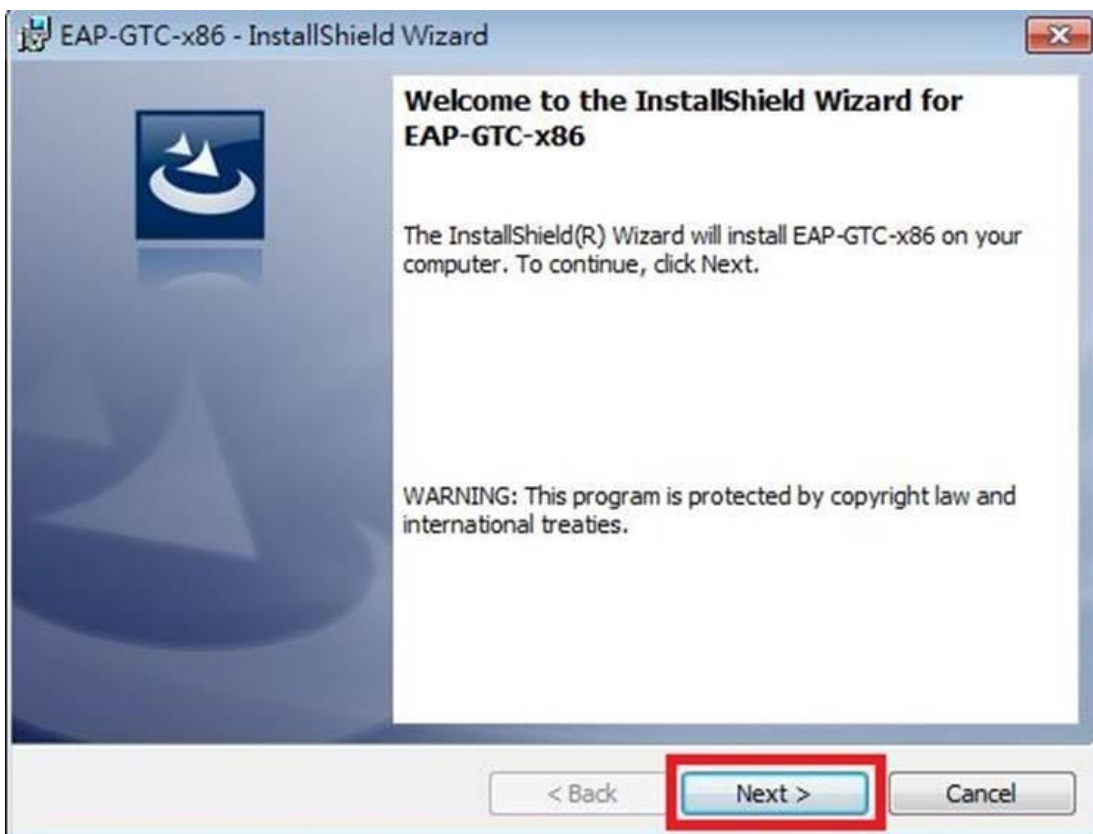
(3). Install the EAP-GTC installation file

The following takes Windows 7, 32-bit operating system environment as an example.

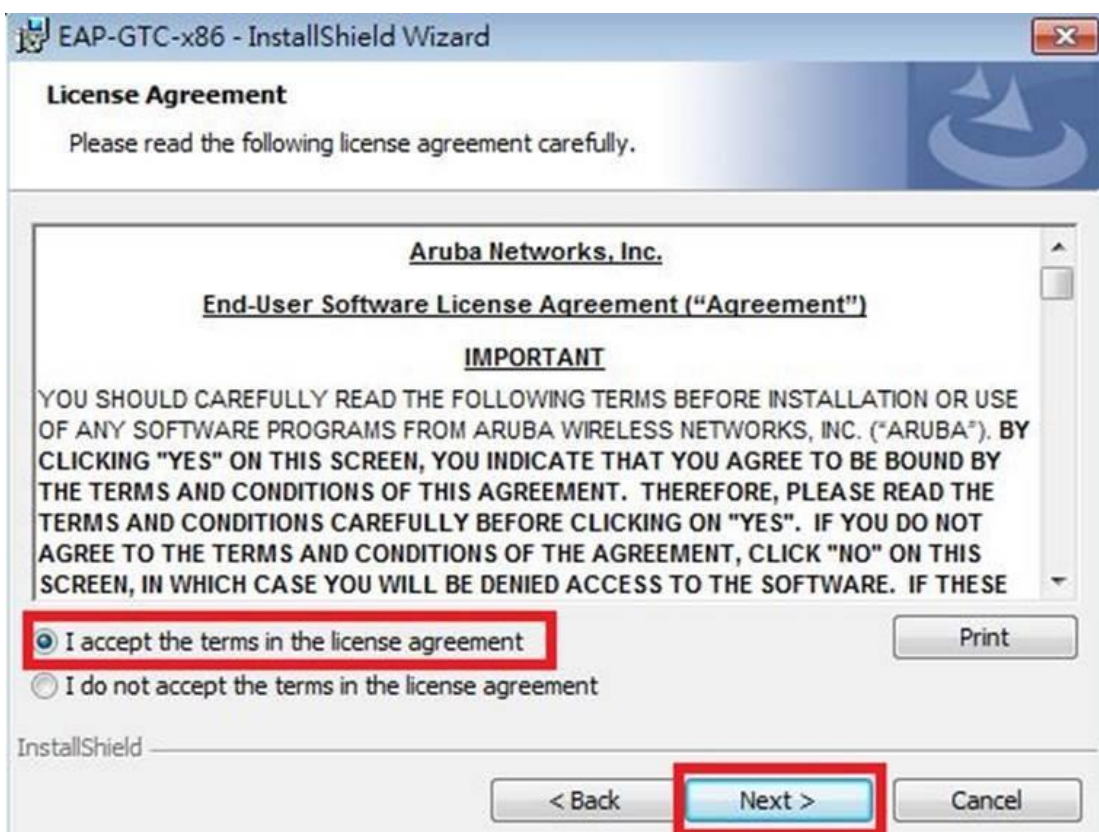
Step 1. Download and install "EAP-GTC-x86-Win7".



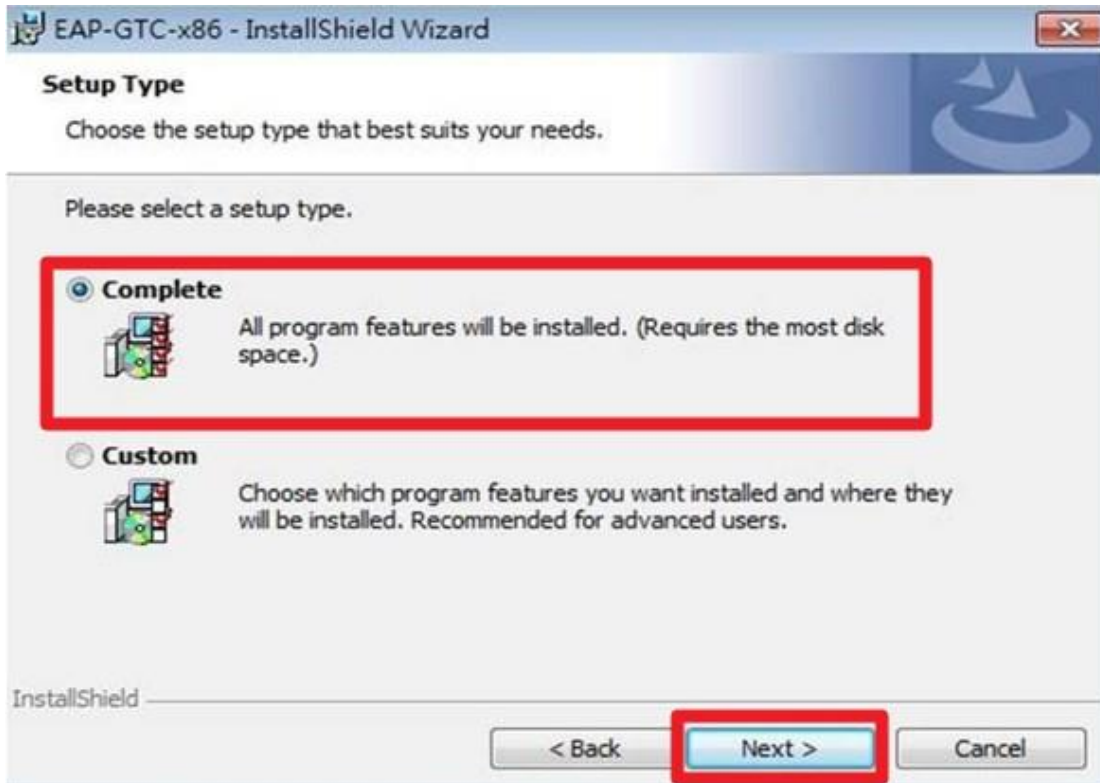
Step 2. After the installation file is executed, this screen appears, click "Next".



Step 3. Select "I accept the terms in the license agreement", and then click "Next".



Step 4. Select "Complete" and click "Next".



Step 5. Click "Install".



Step 6. When the installation is successful, click "Finish".



Step 7. Select "Yes" and wait until the reboot is complete.



(4). Setting the wireless base station

Step 1. Go to "Control Panel" → "Network and Internet" → "Network and Sharing Center", and click "Manage Wireless Networks".



Step 2. Click "Add".





Step 3. Select "Manually create network profile".



Step 4. Enter "eduroam" for the network name, "WPA2-Enterprise" for the security type, "AES" for the encryption type, and finally click "Next".



Step 5. The "eduroam" successfully added screen appears, click "Change Connection Settings".



Step 6. Click on "Security" and click on " set up".



Step 7. Do not check "Confirm Server Credentials" and select the authentication method EAP. -Token, then press "OK".



Step 8. Select "OK" and "Close" according to the following screen.



Step IX. "Manage the wireless network using (wireless network connection)" In the window, you will find an additional wireless base station name for "eduroam".



(5). Connection test

Step 3. Click on the desktop right In the lower corner wireless network icon, select "eduroam" and press Connect.



Step 4. The following login screen will appear, please enter your school email account and Password,

Logon domain No need to enter, click OK, you can go online.

Student email account → s+ student number (no need to enter "@webmail.ntpu.edu.tw")

Staff → Account (no need to enter @mail.ntpu.edu.tw)) p>



The image shows a Windows-style dialog box titled "Enter Credentials". It contains three text input fields: "User name:", "Password:", and "Logon domain:". The "User name:" and "Password:" fields are highlighted with a red border. At the bottom of the dialog are "OK" and "Cancel" buttons. The background of the dialog features a graphic of a globe and two laptops.

## 5. Off-campus roaming method

(1), domestic

If you find the TANetRoaming signal from our school, staff and students, you can use our school's email account and password to roam online. However, the full name of the account should be entered, for example: s10012345@webmail.ntpu.edu.tw, or abc@mail.ntpu.edu.tw.

(2), abroad

If the faculty, staff and students of our school go to foreign units, if they find the eduroam signal, they can use the school's email account and password to roam online. However, the full name of the account should be entered, for example: s10012345@webmail.ntpu.edu.tw, or abc@mail.ntpu.edu.tw.

※Information security reminder: Since the name of the SSID base station can be set freely, in order to avoid the account password being stolen, please confirm that the source of the SSID is reliable, and use it with caution to prevent the account password from being leaked.

(6) Frequently Asked Questions

(1), Unable to connect

1. Make sure the wireless network card is not turned off

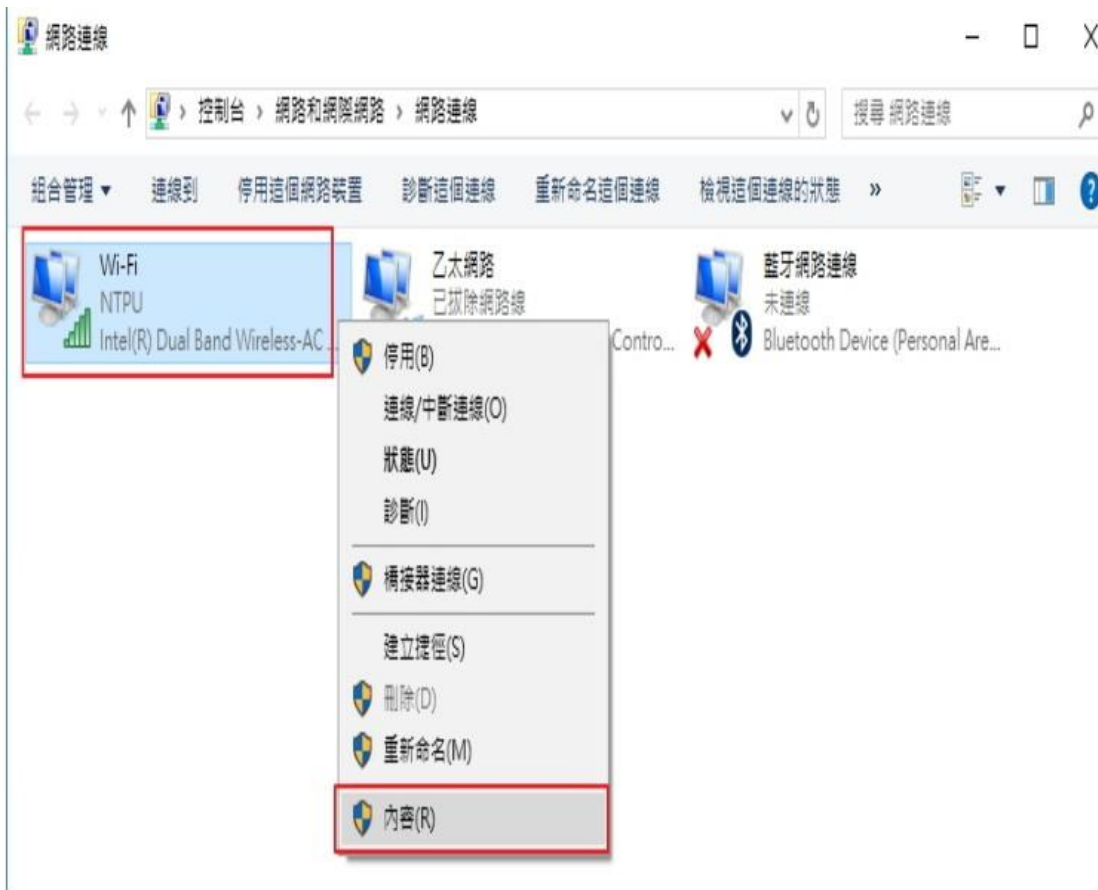


2. Please make sure that the wireless network card is not set with a fixed IP address.

(1). Click the path: Control Panel -> Network and Internet -> Network and Sharing Center -> Change Interface Card Settings.

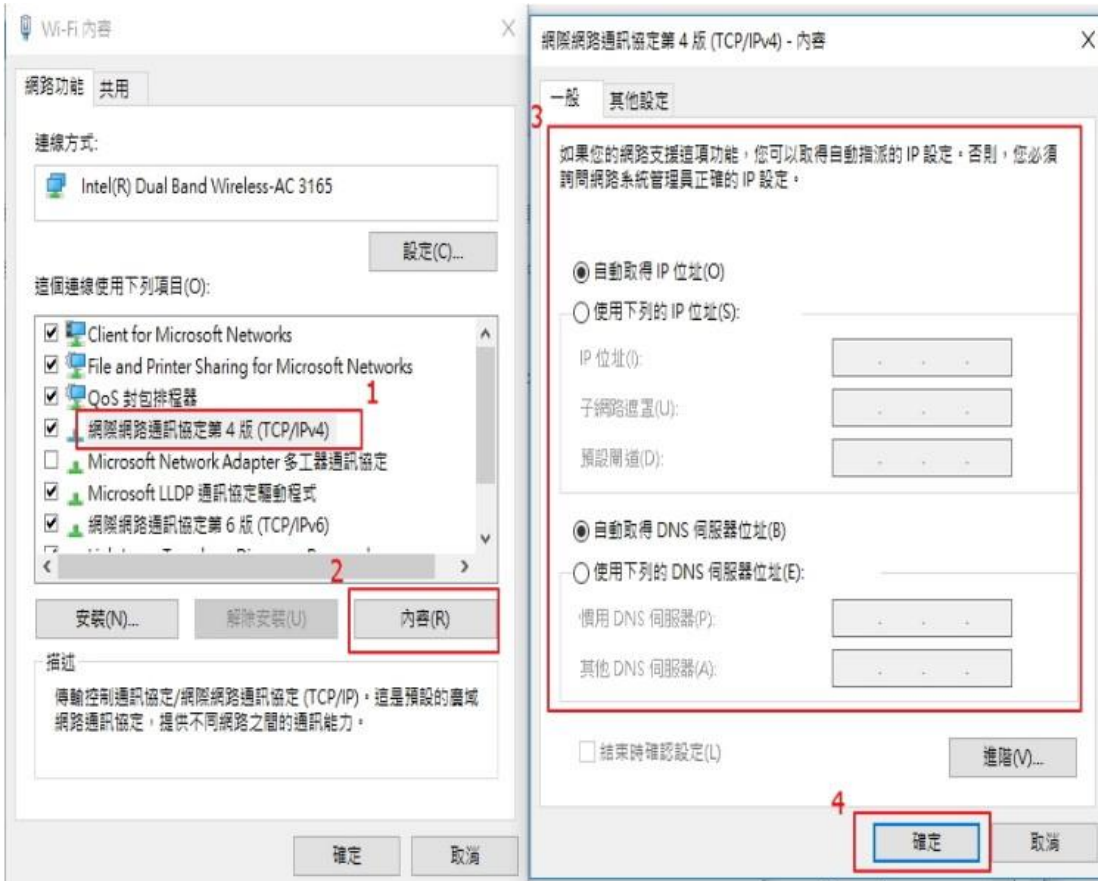


(2). Click "Wi-Fi Wireless Network Card", right-click the icon, and then click "Content".





(3). Make sure that the wireless network card is not set with a fixed IP address.



(2) The method of clearing the wireless network password record in Windows. (The following uses Windows10 as an example)

1. Click "Network Settings" in wifi



2. Click "Wi-Fi", then click "Manage Known Networks"



3. After selecting the SSID to delete the record, select Delete to complete



7. Contact us for wireless network problems :

Contact Number:

(02)8674-1111(extension 68221)(Sanxia Campus)

(02)2502-4654(extension 18096)(Taipei Campus)